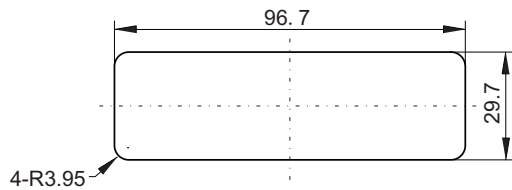


## Common problems & solutions

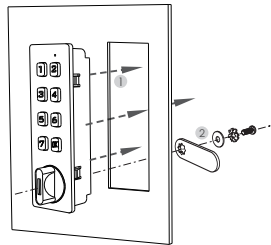
Problems	Primary cause	solution
After code input, "di di di" sound alarm, lock not able to open	Wrong code	Refer to reset
No sound when operating keypad, lock is able to open	Buzzer broken	Replace buzzer

## Installation

### ■ Fixing hole size

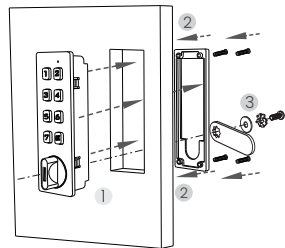


### ■ Installation procedure on metal door



\*Thickness range of the metal door: 0.8 mm ~ 1 mm

### ■ Installation procedure on wooden door



\*Thickness range of the wooden door: 16 mm ~ 24 mm

# Work Manual



customerservice@tayco.com

Tel: 416-252-8000

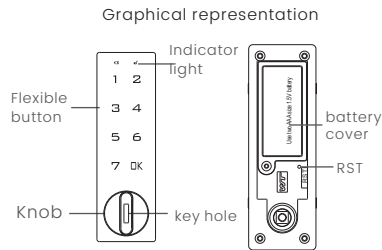
Toll Free: 1-800-675-4092

www.tayco.com

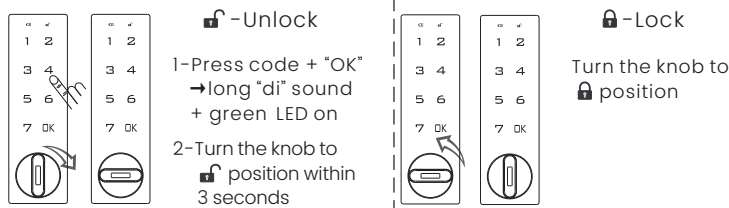
**tayco**®

## Instructions

- 1-Default user code: 1234  
Default master code:4321
- 2-With both public mode and private mode, default mode is private mode



## Unlock & Lock



### NOTE:

1. When lock shows red LED signal means low voltage. When password is wrong alarming sound di di 3 times.
2. User code will reset to factory default code "1234" after inputting management code.

## Setting

### ■ Code Setting (e.g. change "1234" to "123123")

1. Press "1234" + "OK" → long "di" sound + green LED on
2. Press "OK" 2 seconds → long "di" sound + green LED flash
3. Press "123123" + "OK" → long "di" sound: New code activated

### NOTE:

1. Same procedure to change user code and management code
2. Code can be consisted of 4-15 digits, management code and user code cannot be the same.

### ■ Public mode

Turn on public mode

1. Press management code + "OK" → long "di" sound + green LED on
2. Press "OK" 2 seconds → long "di" sound + green LED flash
3. Press "OK" + "4 4" + "OK" → long "di" sound: Public mode activated

### NOTE:

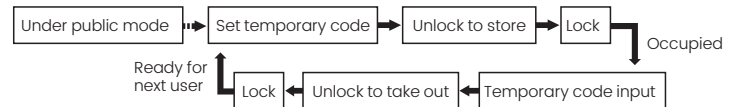
1. Public mode can only be activated by management code
2. Once press the management code, the temporary code will be invalid.

### ■ Setting temporary code (only available at public mode)

Press "OK" + new code (4 - 15 digits) + "OK" → long "di" sound + green LED on: New code activated

### NOTE:

1. Temporary code can be used only 1 time to open the lock, after that you need to reset the temporary code
2. Green LED flash every 3 seconds when occupied



### ■ Turn off public mode

1. Press management code + "OK" → long "di" sound + green LED on
2. Press "OK" 2 seconds → long "di" sound + green LED flash
3. Press "OK" + "4 3" + "OK" → long "di" sound: Public mode off

### ■ Turn on/ off Fake Pin code function

1. Press management code + OK → long "di" sound + green LED on
2. Press "OK" 2 seconds → long "di" sound + green LED flash → press "OK"
3. Press "4 2" + OK → turn on/ Press "4 1" + OK → turn off

### NOTE:

Introduced with Anti - Theft Technology and Fake Pin code function you can input any code(s) before or after the real code to prevent the real code being peeped. Maximum 16 digits.

## Special functions

### ■ Reset:

Put the pin in "RST" hole on battery box, release the pin until you hear long "di" sound. The lock will be changed back to private mode automatically, user code to be 1234 and management code to be 4321.

### ■ Wrong input:

4 times wrong code input will make the lock "dead" for 60 seconds.

### ■ Low voltage:

The lock is at low voltage mode when red LED on during operation. Replace new batteries at your soonest convenient.

### ■ With emergent key function, for after-sale service only.