

fabric specifications

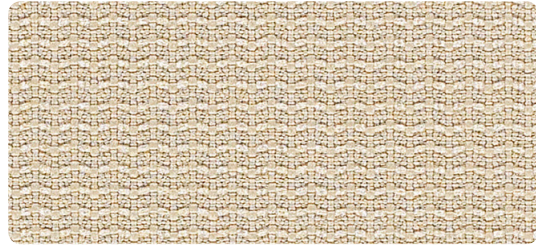
pattern	content	width	weight	breaking strength	colorfastness to light	flammability
glint	100% post consumer recycled polyester	66" usable	17.0 ± 1.0 oz./lin. yd.	ASTM 5034 335 lbs. min. warp 366 lbs. min. fill	A4.5 - AATCC 16 opt 3, class 4.5 40 hours min.	ASTM E-84 class 1 or A
kinect	100% post consumer recycled polyester	66" usable	17.8 ± 1.0 oz./lin. yd.	ASTM 5034 364 lbs. min. warp 375 lbs. min. fill	A4.5 - AATCC 16 opt 3, class 4.5 40 hours min.	ASTM E-84 class 1 or A
script	89% post consumer recycled polyester 11% polyester	66" usable	1.07 lbs	ASTM 5034 299 lbs. min warp 373 lbs. min fill	A4.5 - AATCC 16 opt 3, class 4.5	ASTM E-84 class 1 or A
pact	65% post industrial recycled polyester, 35% post consumer recycled polyester	66" usable	13.0 ± 1.0 oz./lin. yd.	ASTM 5034 292 lbs. min. warp 307 lbs. min. fill	AATCC 16 opt 3, class 4 60 hours min.	CA Bulletin 117 2013, UFAC class 1, ASTM E-84
millennium c zero	85% post consumer recycled polyester, 15% polyester	54" usable	0.99 lbs	ASTM 5034 336 lbs. min. warp 279 lbs. min. fill	AATCC 16 opt 3, class 4 60 hours min.	CA Bulletin 117 2013, UFAC class 1, NFPA 260 class 1, ASTM E-84
feltro	100% polyester	56" usable	1.23 lbs	ASTM 5034 306 lbs. min. warp 299 lbs. min. fill	AATCC 16 opt 3, class 4 60 hours min.	CA Bulletin 117 2013, UFAC class 1, NFPA 260 class 1, ASTM E-84
mello	80% post consumer recycled polyester, 20% polyester	56" usable	1.01 lbs	ASTM 5034 379 lbs. min. warp 352 lbs. min. fill	AATCC 16 opt 3, class 4 60 hours min.	CA Bulletin 117 2013, UFAC class 1, NFPA 260 class 1, ASTM E-84
canter	100% EPU polyurethane polyester backing	54" usable	1.72 lbs	ASTM 5034 0 lbs. min. warp 0 lbs. min. fill	AATCC 16 opt 3, class 4	CA Bulletin 117 2013, UFAC class 1, NFPA 260 class 1
expo	65% post industrial recycled polyester, 35% post consumer recycled polyester	54" usable	0.54 lbs	ASTM 5034 142 lbs. min. warp 143 lbs. min. fill	AATCC 16 opt 3, class 4	CA Bulletin 117 2013, UFAC class 1, NFPA 260 class 1

NOTE: Dye lots may vary slightly from samples shown.

For memo samples please contact:

panel fabric | grade two

glint



turret F8162



serene F8062



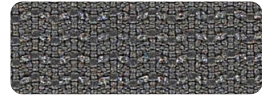
vera F8042



pumice F8122



column F8092

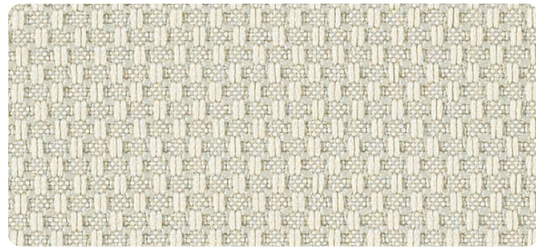


shale F8152



caspian F8072

kineet - discontinued



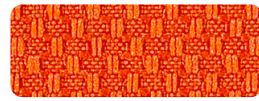
veil F7022



nimbus F7132



mushroom F7112



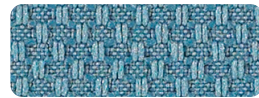
passion F7032



mercury F102



alloy F7072



cove F7062

script



charcoal F7512



shadow F7582



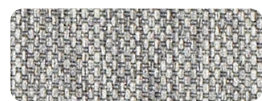
sterling F7602



taupe F7612



zinc F7622

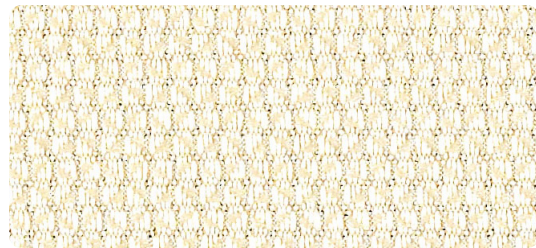


slate F7592



sand F7572

pact



calla F6692



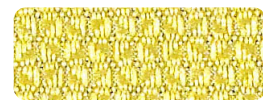
toasty F6702



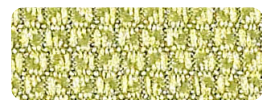
putty F6682



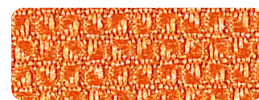
taupe F6822



lime F6832



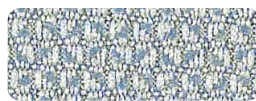
fern F6792



nectar F6732



coastal F6722



harbour F6802



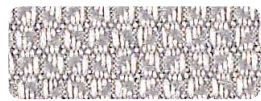
azure F6762



delft F6842



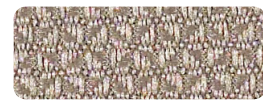
roma F6812



dove F6712



patina F6872



lily F6852



sketch F6902



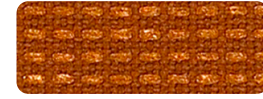
midnight F6892

seating fabric | grade two, three & six

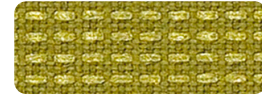
millennium c zero | grade 2



clean F8562



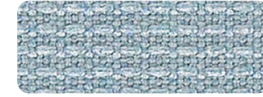
amber F8512



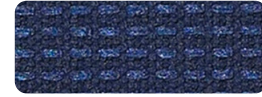
peridot F8682



anchor F8522



voyage F8782

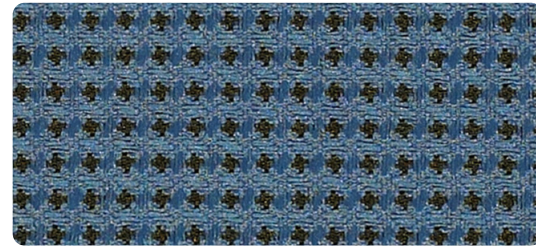


coastal F8572

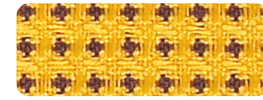


onyx F8662

expo | grade 2



sky F3582



lemon F3552



festive F3522



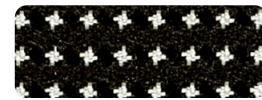
leaf F3572



fog F3512



latte F3562



tuxedo F3502

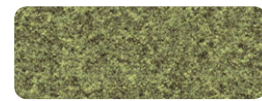
feltro | grade 3



cloud F9582



birch F9532



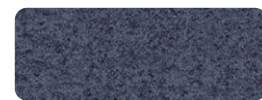
sprout F9682



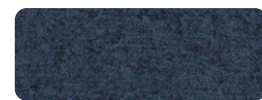
steel F9702



spa F9672

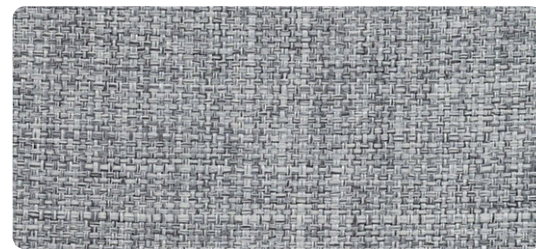


dusk F9592

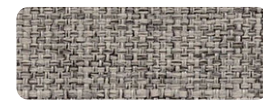


ink F9612

mello | grade 3



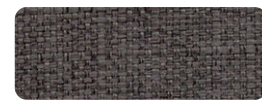
mineral F9622



thicket F7962



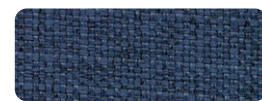
fossil F7842



sable F7942



river F7972



aegean F7782

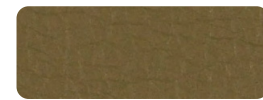


fuschia F7852

canter | grade 6



quarry F5786



alfalfa F5516



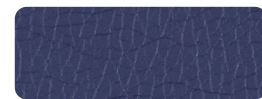
storm F5856



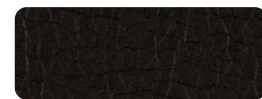
ballad F5536



lucid F5696



ink F5666



onyx F5746