



panel fabric | grade one

panel fabric specifications | grade one

pattern	content	width	weight	breaking strength ASTM D5034	colorfastness to light AATCC 16E	flammability ASTM E-84
ballo	100% polyester	67" usable	19.5 ± 1.0 oz./lin. yd.	230.8 lbf.min. warp, 300 lbf. min. fill	class 4.5 at 40 hours min	class 1 or A passes
zapote	100% polyester	67" usable	19.5 ± 1.0 oz./lin. yd.	250 lbf. min. warp, 300 lbf. min. fill	class 5 at 40 hours min	class 1 or A passes
crevasse	100% polyester	66" usable	12.0 ± 1.0 oz./lin. yd.	250 lbf. min. warp, 300 lbf. min. fill	class 5 at 40 hours min	class 1 or A passes
commerce	100% polyester	66" usable	12.0 ± 1.0 oz./lin. yd.	250 lbf. min. warp, 300 lbf. min. fill	class 5 at 40 hours min	class 1 or A passes
reticolo	100% polyester	67" usable	12.0 ± 1.0 oz./lin. yd.	250 lbf. min. warp, 300 lbf. min. fill	class 5 at 40 hours min	class 1 or A passes

panel fabric | grade one

ballo



sand F5181



oceanic F6131



aurora F6121



dusk F6171



seaside F5191



stone F6151



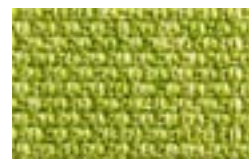
nightfall F6161



pebble F5171



sunset F6141



moss F6111

zapote



garter F4141



lace F4181



stockinette F4151



intarsia F4171



cable F4161

crevasse



crown blue F3191



neutral grey F3201

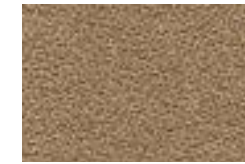


chamonix F3181

commerce



slate F2141



sand F2151



grey F2161



steam F2201



kiwi F2221



steel grey F2171



cyan blue F2211



citrus F2231

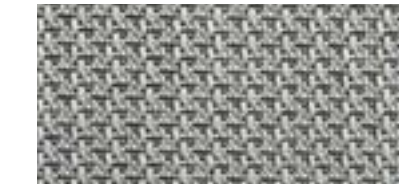


fjord F2181

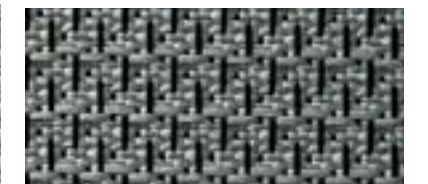
reticolo



amaranth F4131



grain F4111



sesame F45D1



seed F4121



chia F4351



barley F41D1