



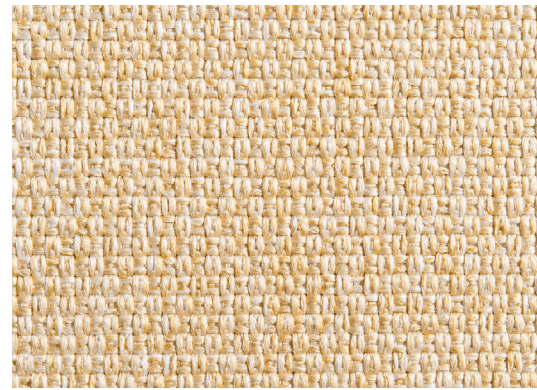
panel fabric | grade one

panel fabric specifications | grade one

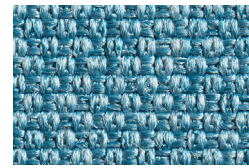
pattern	content	width	weight	 breaking strength ASTM D5034	 colorfastness to light AATCC 16E	 flammability ASTM E-84
ballo	100% polyester	67" usable	19.5 ± 1.0 oz./lin. yd.	230.8 lbf.min. warp, 300 lbf. min. fill	class 4.5 at 40 hours min	class 1 or A passes
zapote	100% polyester	67" usable	19.5 ± 1.0 oz./lin. yd.	250 lbf. min. warp, 300 lbf. min. fill	class 5 at 40 hours min	class 1 or A passes
crevasse	100% polyester	66" usable	12.0 ± 1.0 oz./lin. yd.	250 lbf. min. warp, 300 lbf. min. fill	class 5 at 40 hours min	class 1 or A passes
commerce	100% polyester	66" usable	12.0 ± 1.0 oz./lin. yd.	250 lbf. min. warp, 300 lbf. min. fill	class 5 at 40 hours min	class 1 or A passes
reticolo	100% polyester	67" usable	12.0 ± 1.0 oz./lin. yd.	250 lbf. min. warp, 300 lbf. min. fill	class 5 at 40 hours min	class 1 or A passes

panel fabric | grade one

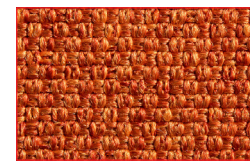
ballo



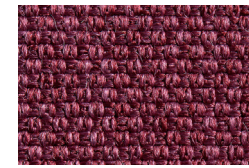
sand F5181



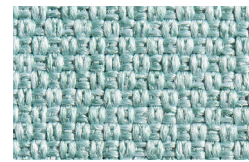
oceanic F6131



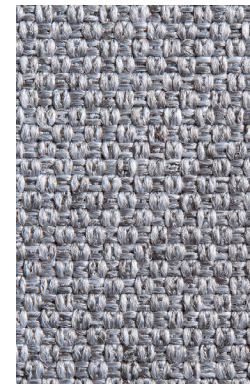
aurora F6121



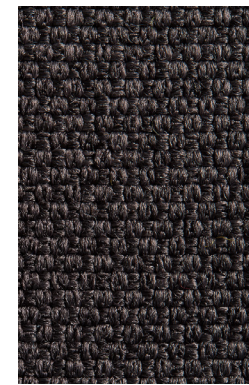
dusk F6171



seaside F5191



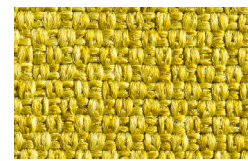
stone F6151



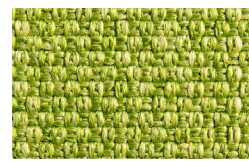
nightfall F6161



pebble F5171



sunset F6141

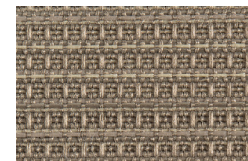


moss F6111

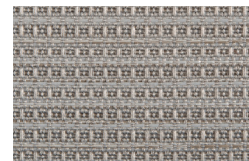
zapote



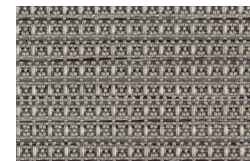
garter F4141



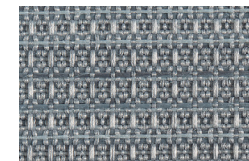
lace F4181



stockinette F4151

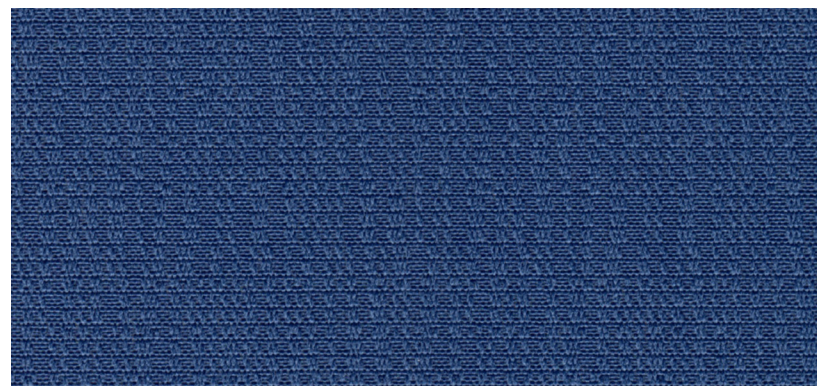


intarsia F4171

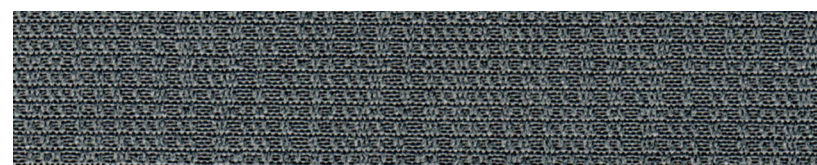


cable F4161

crevasse



crown blue F3191

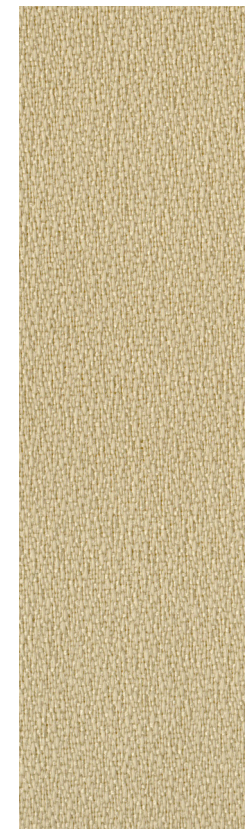


neutral grey F3201

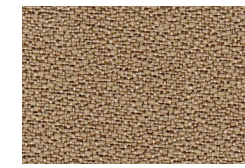


chamonix F3181

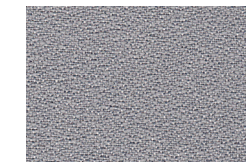
commerce



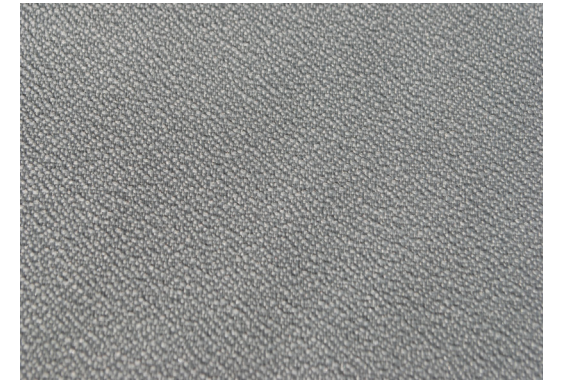
slate F2141



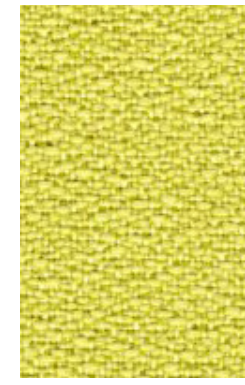
sand F2151



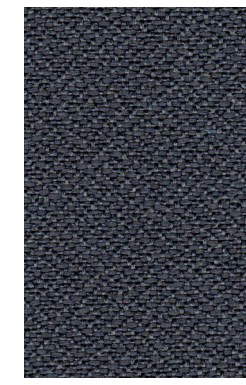
grey F2161



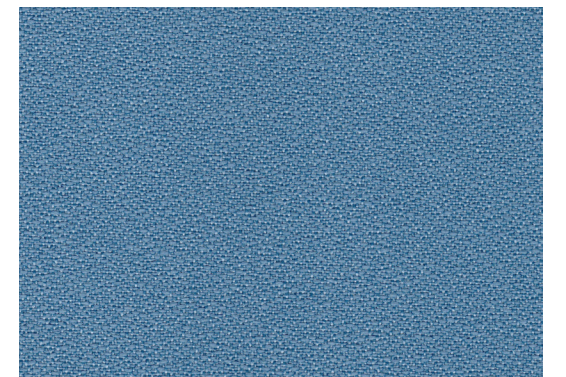
steam F2201



kiwi F2221



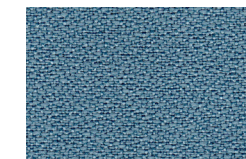
steel grey F2171



cyan blue F2211



citrus F2231

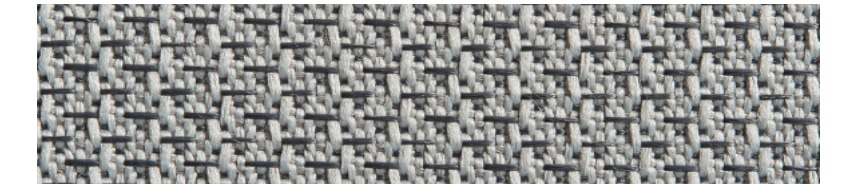


fjord F2181

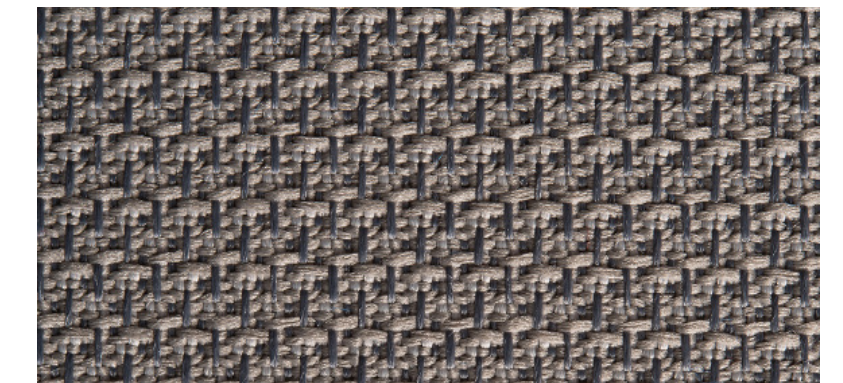
reticolo



amaranth F4131



grain F4111



seed F4121