

fabric specifications

panel fabric | grade two



pattern	content	width	weight	breaking strength	colorfastness to light	flammability
dune	100% polyester	66" usable	11.0 ± 1.0 oz./lin. yd.	ASTM D5034 160 lbf. warp, 110 lbf. fill	AATCC 16.3 grade 4 min. at 40 hours	ASTM E-84 class 1 or A
metallation	56% post-consumer recycled polyester 44% polyester	66" usable	15.2 ± 0.5 oz./lin. yd.	ASTM D5034 150 lbf. min. warp, 150 lbf. min. fill	AATCC 16.3 grade 4 min. at 40 hours	ASTM E-84 class 1 or A
binary	100% post-consumer recycled polyester	66" usable	11.0 ± 1.0 oz./lin. yd.	ASTM D3597-02 100 lbs. min. warp, 100 lbs. min. fill	AATCC 16-2004 min. 40 hours	ASTM E-84-10 class 1 or A state of CA. tech bulletin, 117 sec. E (CS-191-53) passes
tweed	Terratex® 25% postconsumer recycled polyester 75% pre-consumer recycled polyester	66" usable	11.7 ± 1.0 oz./lin. yd.	ASTM D5034 225 lbf min. warp, 175 lbf min. fill	AATCC 16.3 grade 4 min. at 40 hours	ASTM E-84 class 1 or A
broadcast	100% polyester	66" usable	9.5 ± 0.5 oz./lin. yd.	ASTM D5034 150 lbf. min. warp, 100 lbf. min. fill	AATCC 16.3 grade 4 min. at 40 hours	ASTM E-84 class 1 or A
crosstown	Terratex® 23% post-consumer recycled polyester 77% pre-consumer recycled polyester	66" usable	13.6 ± 1.0 oz./lin. yd.	ASTM D5034 250 lbf. min. warp, 150 lbf. min. fill	AATCC 16.3 grade 4 min. at 40 hours	ASTM E-84 class 1 or A
cascade	100% post-consumer recycled polyester	66" usable	11.0 ± 1.0 oz./lin. yd.	ASTM D3597-02 100 lbs. min. warp, 100 lbs. min. fill	AATCC 16-2004 min. 40 hours	ASTM E-84 class 1 or A state of CA. tech bulletin, 117 sec. E (CS-191-53) passes

panel fabric | grade two

dune



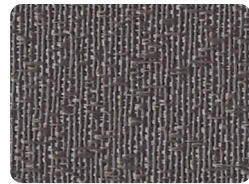
erosion F2382



drift F2392



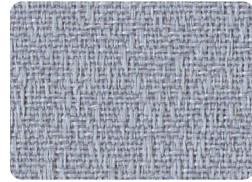
shell F2322



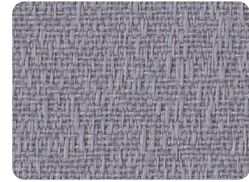
boardwalk F2332



deep night F2312



clear sky F2342



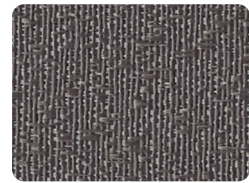
caribbean F2352



basin F2212



sea grass F2202

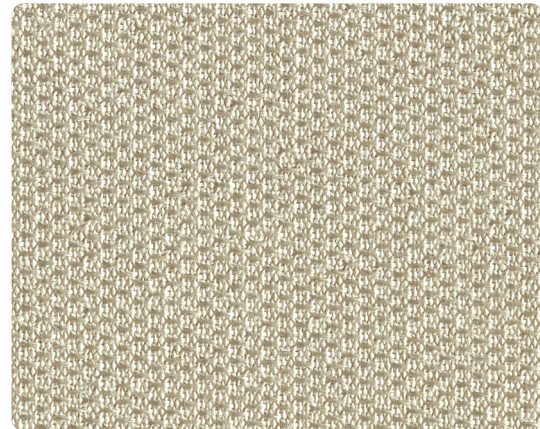


raven F2302

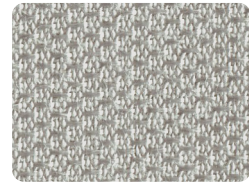


darkness F2372

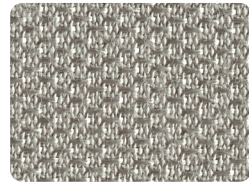
metallation



chrome F3202



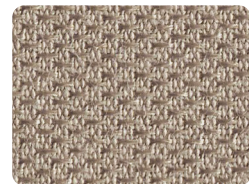
stainless F3212



polished pewter F3222



dark annealed F3242



welded steel F3252



stove pipe F3232



bronze F3262



18 karat F3272

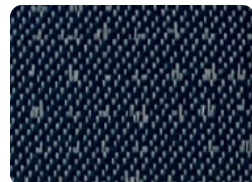


fired titanium F3282

binary



blueray F5202



chipset F5212



modem F5222



optical F5232

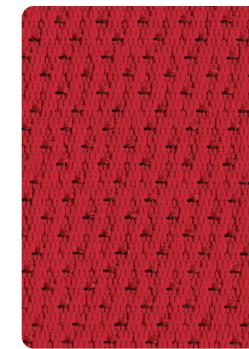


matter F5242

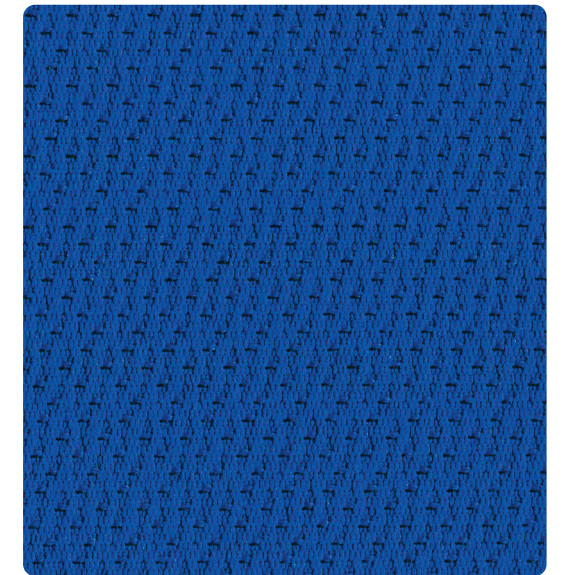
tweed



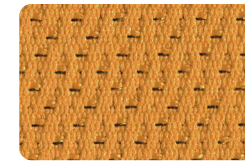
leaf F9202



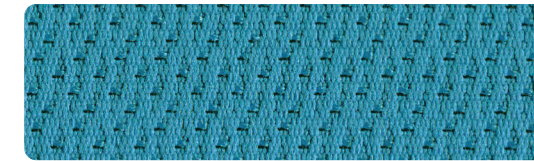
lipstick F9232



royal blue F9262

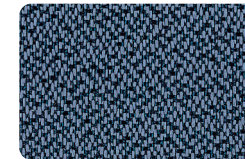


orange F9212

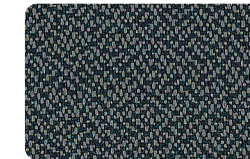


spa F9252

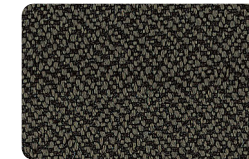
broadcast



chicory F0202



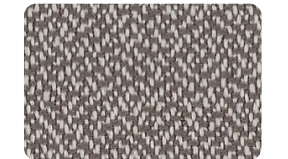
graphite F0212



mink F0222



serengeti F0232



shade F0242

crosstown



trompe d'oeil F1202



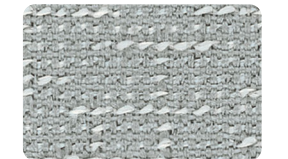
stucco F1222



buff F1252



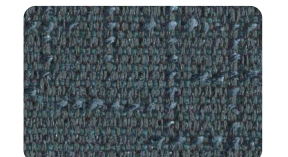
charcoal F1262



stirling F1212



fieldstone F1272

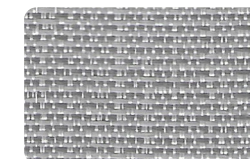


mystic F1282

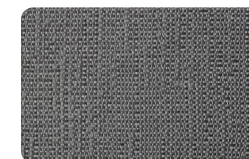
cascade



stack F4202



gorge F4222



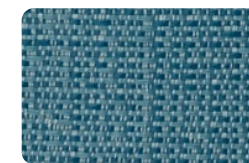
bauxite F4232



igneous F4262



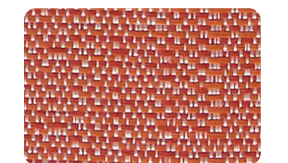
alluvium F4212



aquifer F4252



peak F4272



plutonic F4282